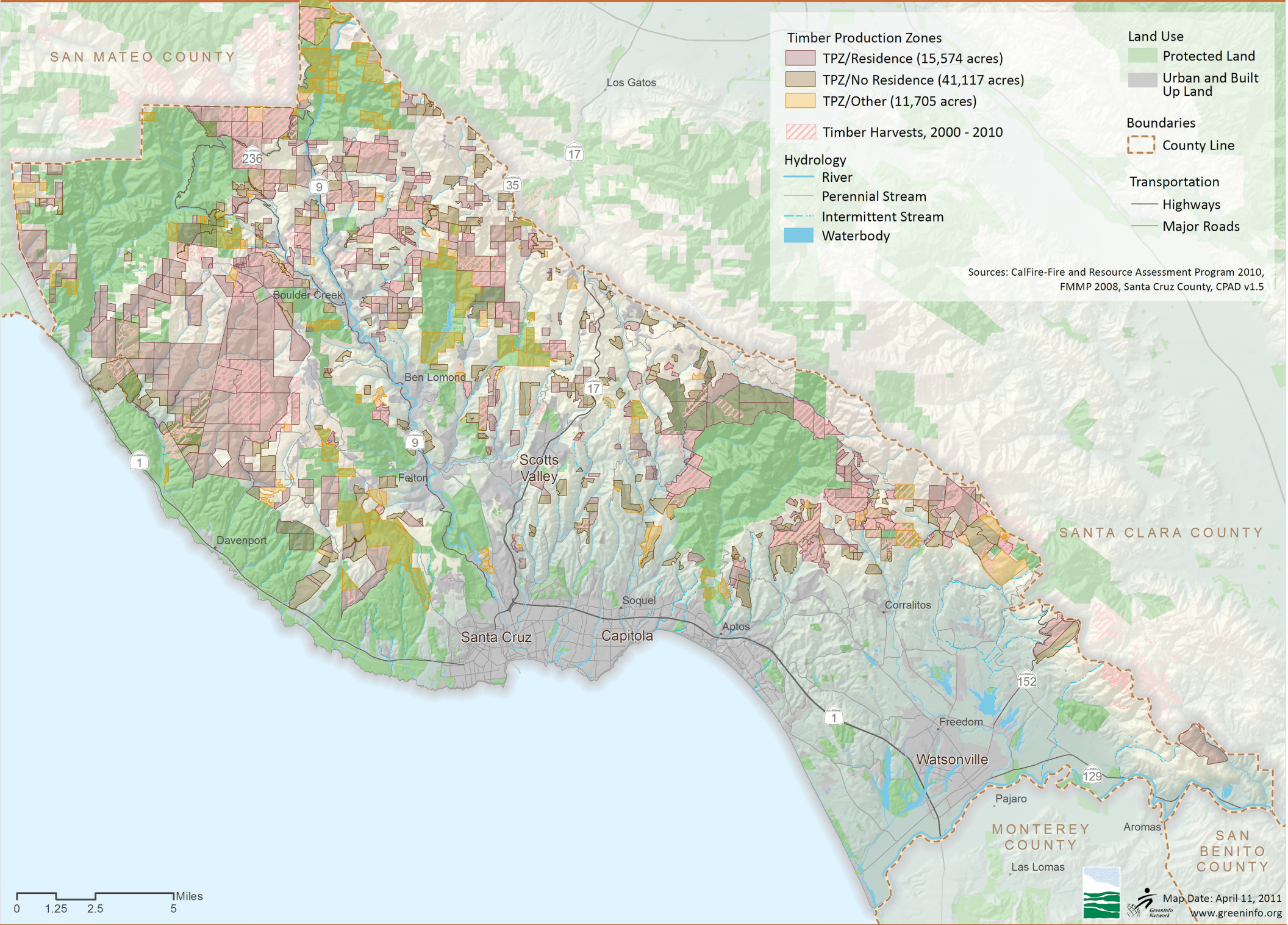


Timber Resources of Santa Cruz County



Timber Production Zones

- TPZ/Residence (15,574 acres)
- TPZ/No Residence (41,117 acres)
- TPZ/Other (11,705 acres)

Timber Harvests, 2000 - 2010

Hydrology

- River
- Perennial Stream
- Intermittent Stream
- Waterbody

Land Use

- Protected Land
- Urban and Built Up Land

Boundaries

County Line

Transportation

- Highways
- Major Roads

Sources: CalFire-Fire and Resource Assessment Program 2010, FMMP 2008, Santa Cruz County, CPAD v1.5

