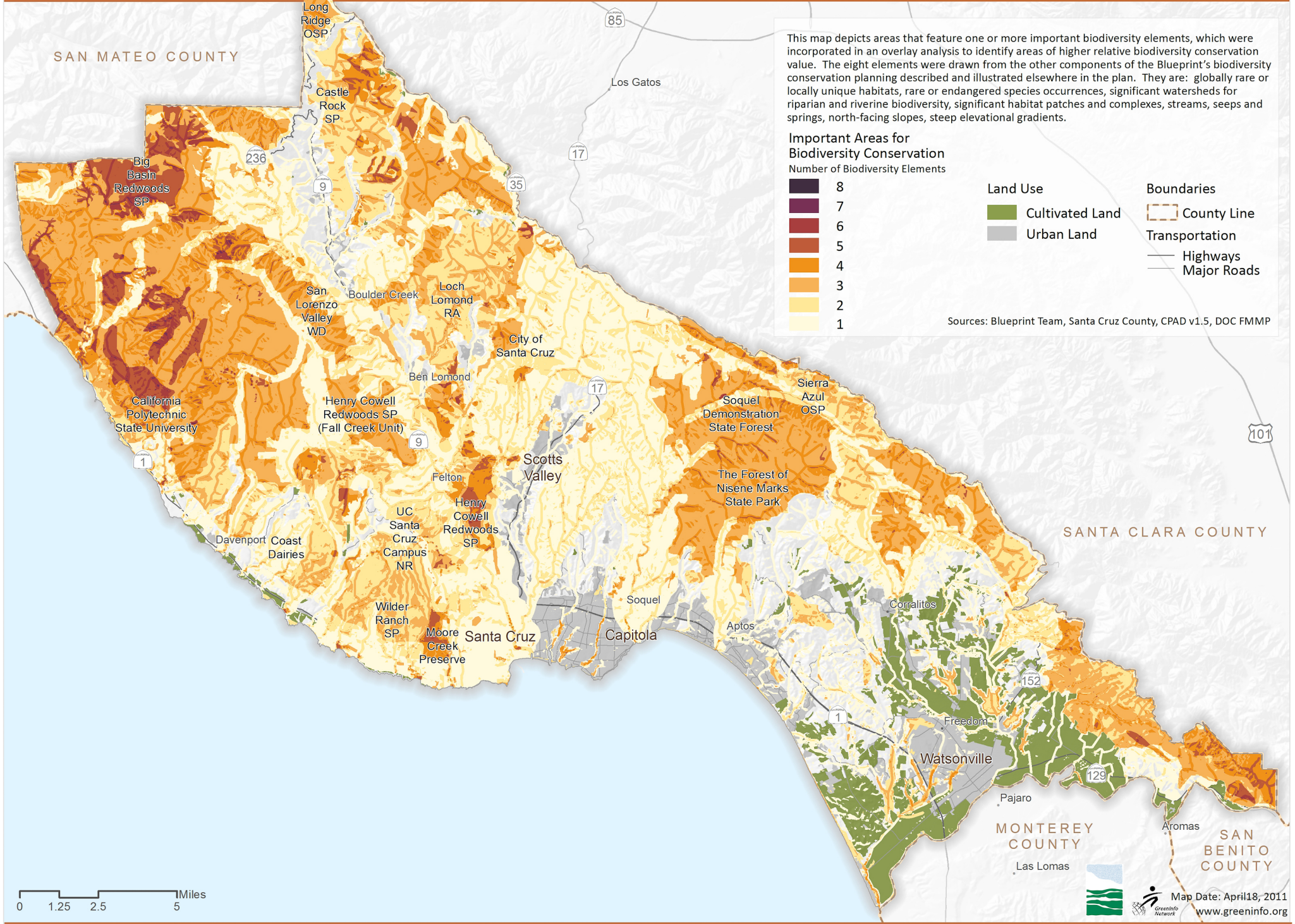
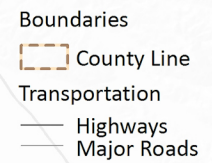
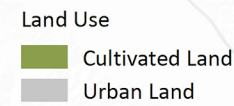
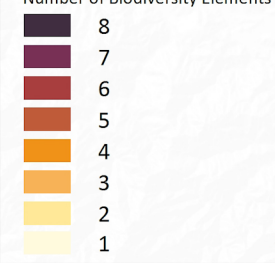


Important Areas for Biodiversity Conservation



This map depicts areas that feature one or more important biodiversity elements, which were incorporated in an overlay analysis to identify areas of higher relative biodiversity conservation value. The eight elements were drawn from the other components of the Blueprint's biodiversity conservation planning described and illustrated elsewhere in the plan. They are: globally rare or locally unique habitats, rare or endangered species occurrences, significant watersheds for riparian and riverine biodiversity, significant habitat patches and complexes, streams, seeps and springs, north-facing slopes, steep elevational gradients.

Important Areas for Biodiversity Conservation



Sources: Blueprint Team, Santa Cruz County, CPAD v1.5, DOC FMMP

