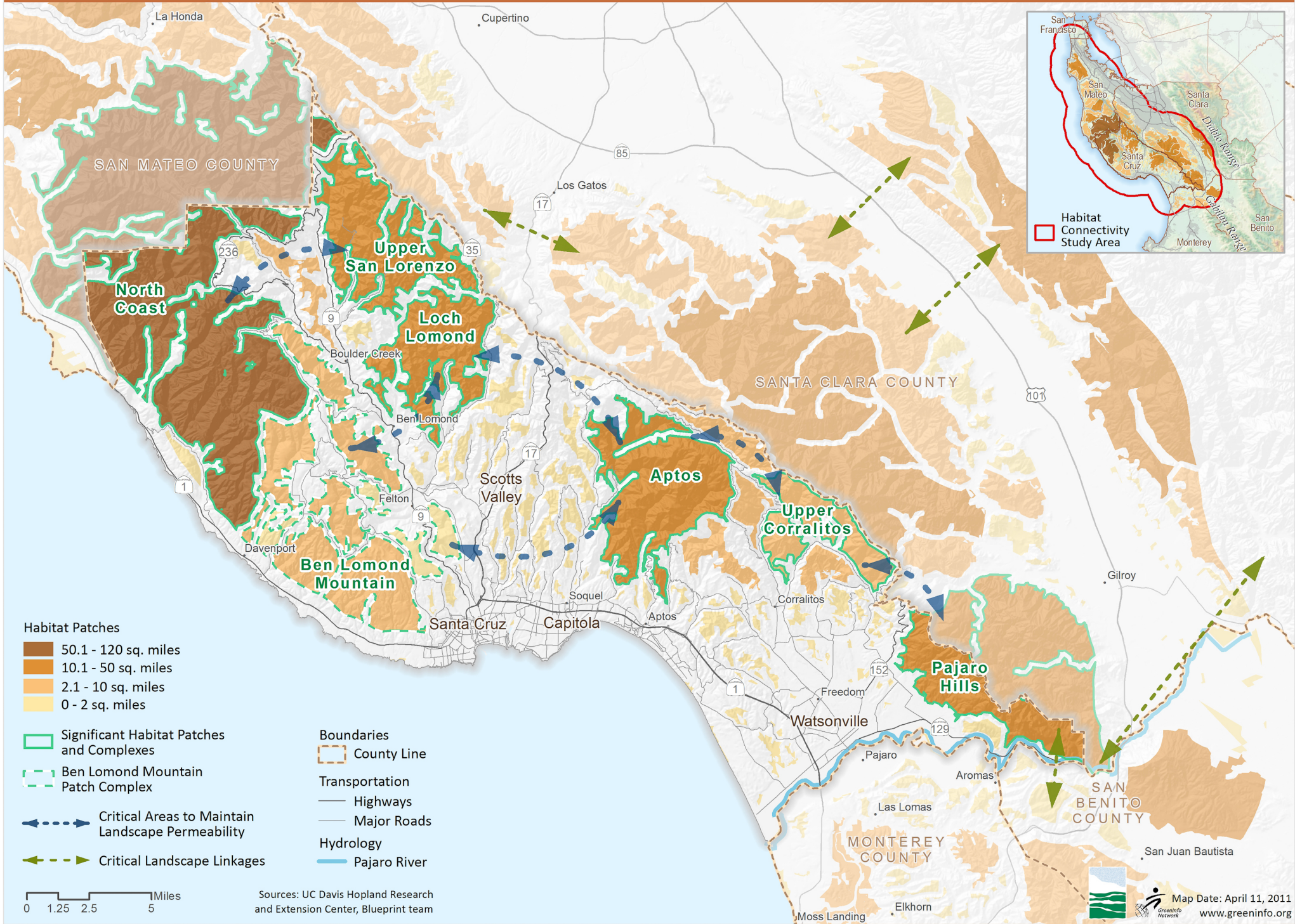


# Habitat Connectivity



- Habitat Patches**
- 50.1 - 120 sq. miles
  - 10.1 - 50 sq. miles
  - 2.1 - 10 sq. miles
  - 0 - 2 sq. miles

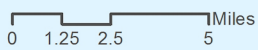
- Significant Habitat Patches and Complexes
- Ben Lomond Mountain Patch Complex

- Critical Areas to Maintain Landscape Permeability
- Critical Landscape Linkages

- Boundaries**
- County Line

- Transportation**
- Highways
  - Major Roads

- Hydrology**
- Pajaro River



Sources: UC Davis Hopland Research and Extension Center, Blueprint team